







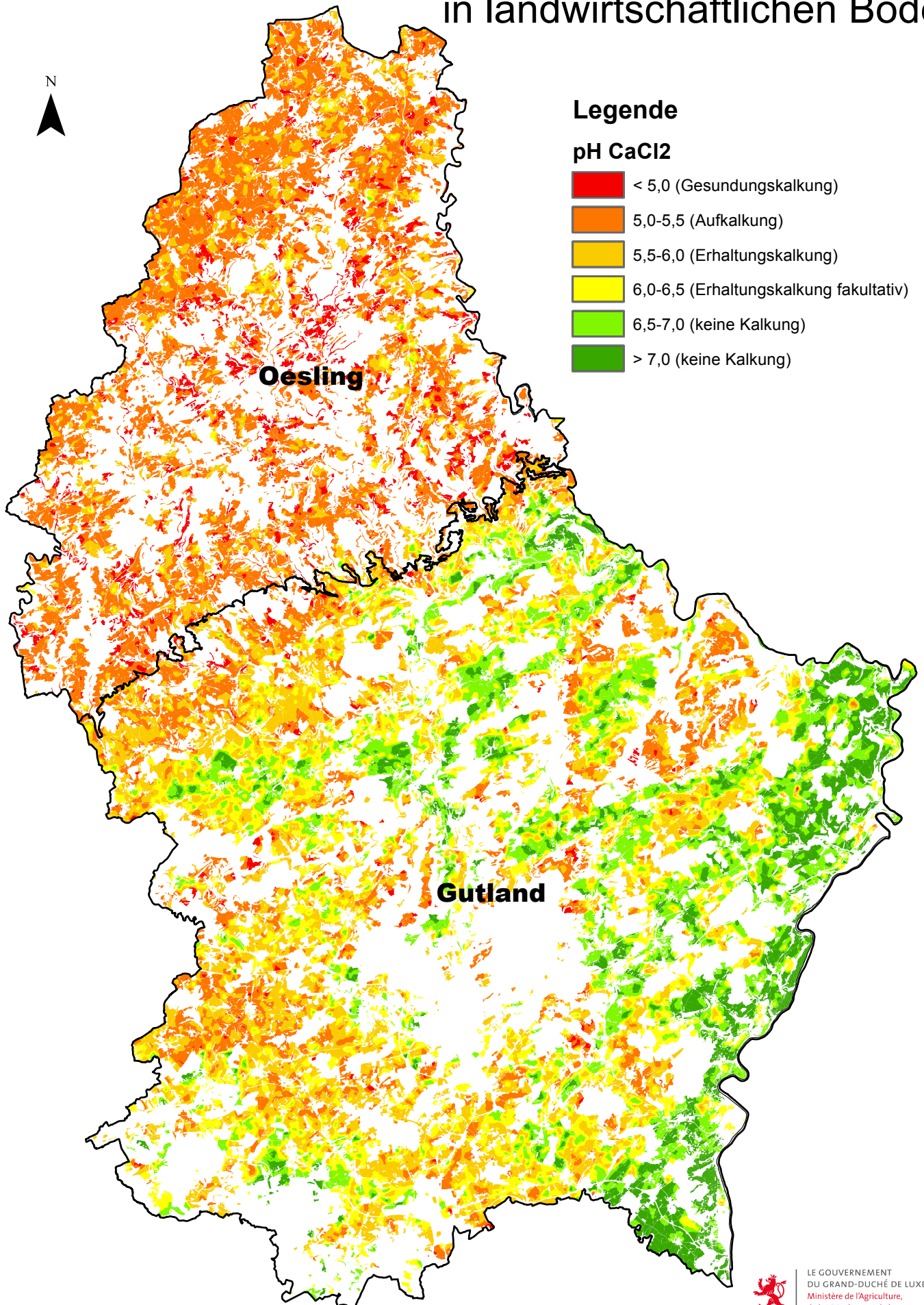
Bodenacidität (pH_{CaCl2}) in landwirtschaftlichen Böden



Legende

pH CaCl₂

-  < 5,0 (Gesundungskalkung)
-  5,0-5,5 (Aufkalkung)
-  5,5-6,0 (Erhaltungskalkung)
-  6,0-6,5 (Erhaltungskalkung fakultativ)
-  6,5-7,0 (keine Kalkung)
-  > 7,0 (keine Kalkung)



Quelle: ASTA-Bodenlabor 2009-2014



LE GOUVERNEMENT
DU GRAND-DUCHÉ DE LUXEMBOURG
Ministère de l'Agriculture,
de la Viticulture et de la
Protection des consommateurs

Administration des services techniques
de l'agriculture
Service de pédologie